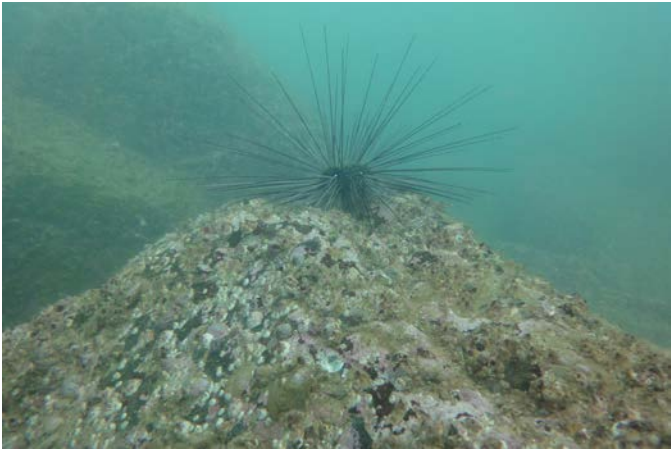







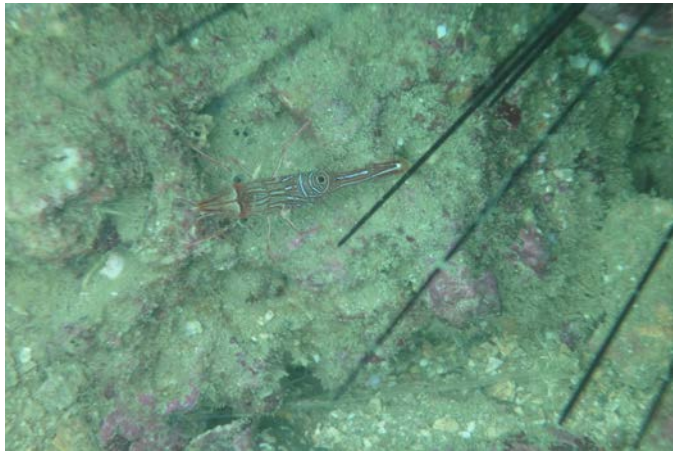
*Annex A1 Photographic Records of Fauna Observed at Zone A - Cape Collinson during the REA Survey for the February 2014 Post-Project Coral Monitoring Survey*

<b>Barnacles and <i>Diadema</i> sp.</b>	<b>Zoanthids</b>	<b>Soft Coral Community</b>
		
<b><i>Colochirus quadrangularis</i></b>	<b><i>Dendronephthya</i> community</b>	<b>Barnacles</b>
		




**Hingebeak Shrimp**  
*(Rhynchocinetes rugulosa)*

**Encrusting sponges**

**Cowrie (*Cypraea arabica*)**



*Annex A2 Photographic Records of Fauna Observed at Zone C – Tung Lung Chau during the REA Survey for the February 2014 Post-Project Coral Monitoring Survey*

<p><i>Tubastrea</i> sp.</p>	<p>Zoanthids, Sea anemones, Sea urchins (<i>Anthocidaris crassipina</i>)</p>	<p><i>Dendronephthya</i> colony on boulder with encrusting coralline algae</p>
		
<p><i>Nudibranch</i></p>	<p>Zoanthids</p>	
