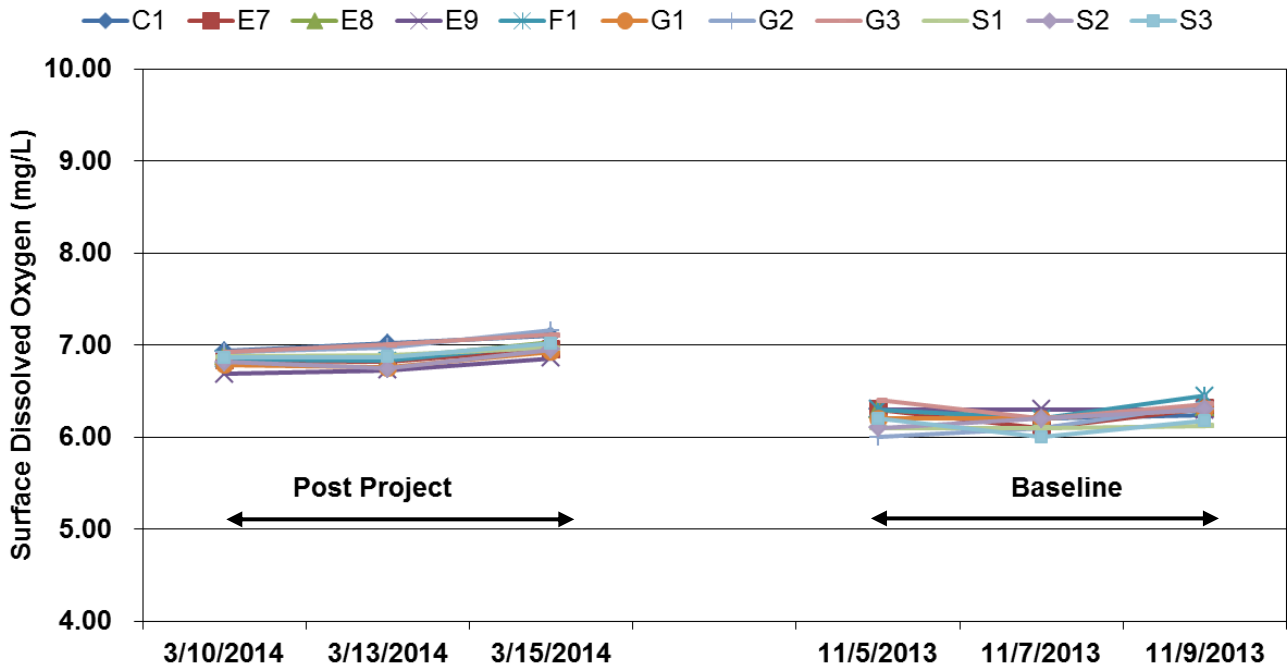


Mid-ebb Dissolved Oxygen (Surface)



Mid-flood Dissolved Oxygen (Surface)

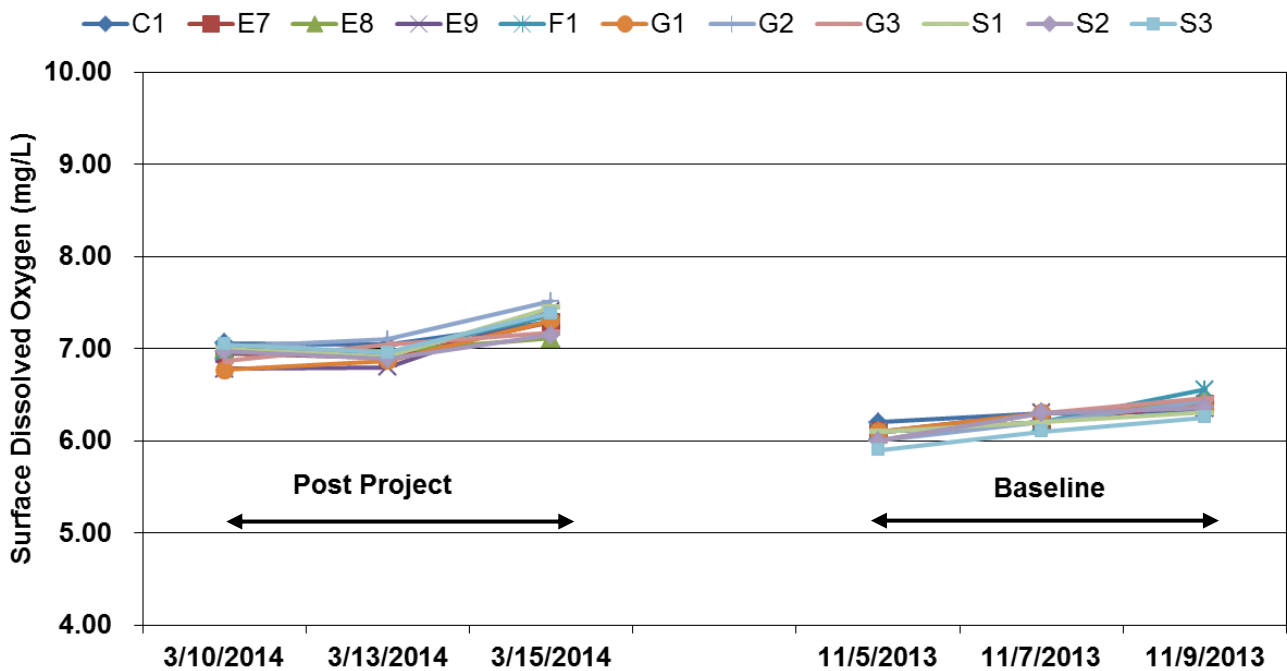
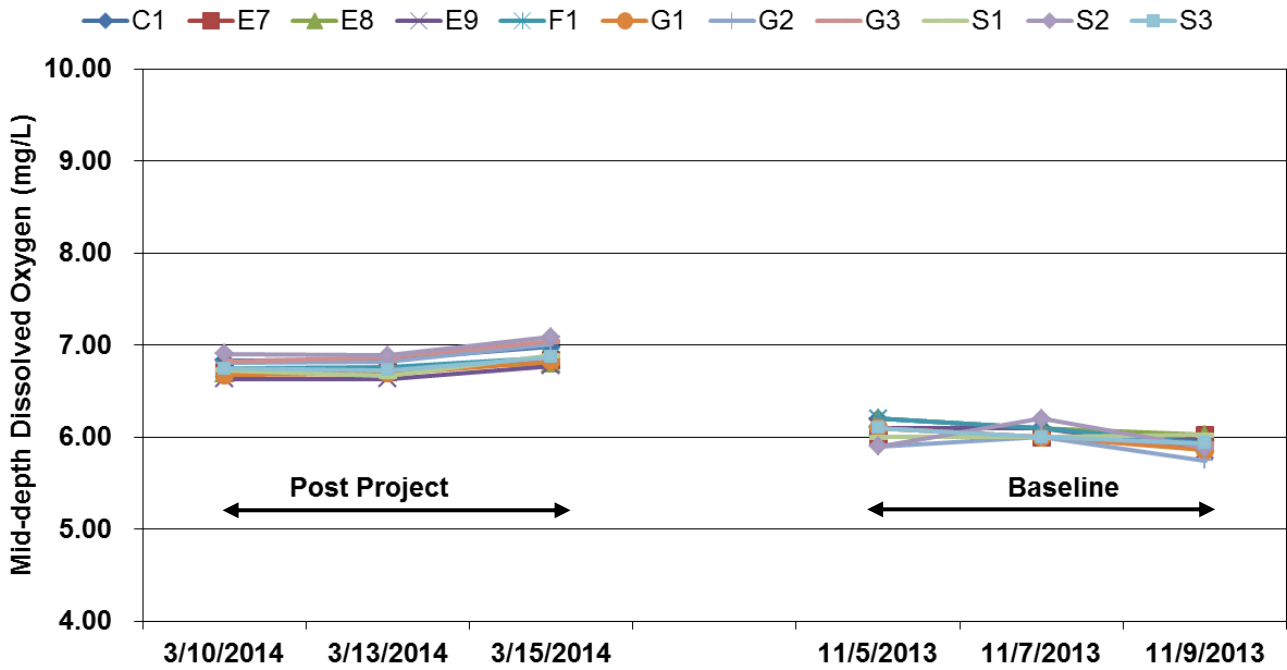


Figure D1 Dissolved oxygen (mg/L) at surface of water column measured during the post-project monitoring period from 10 to 15 March 2014 for Zone A



Mid-ebb Dissolved Oxygen (Mid-depth)



Mid-flood Dissolved Oxygen (Mid-depth)

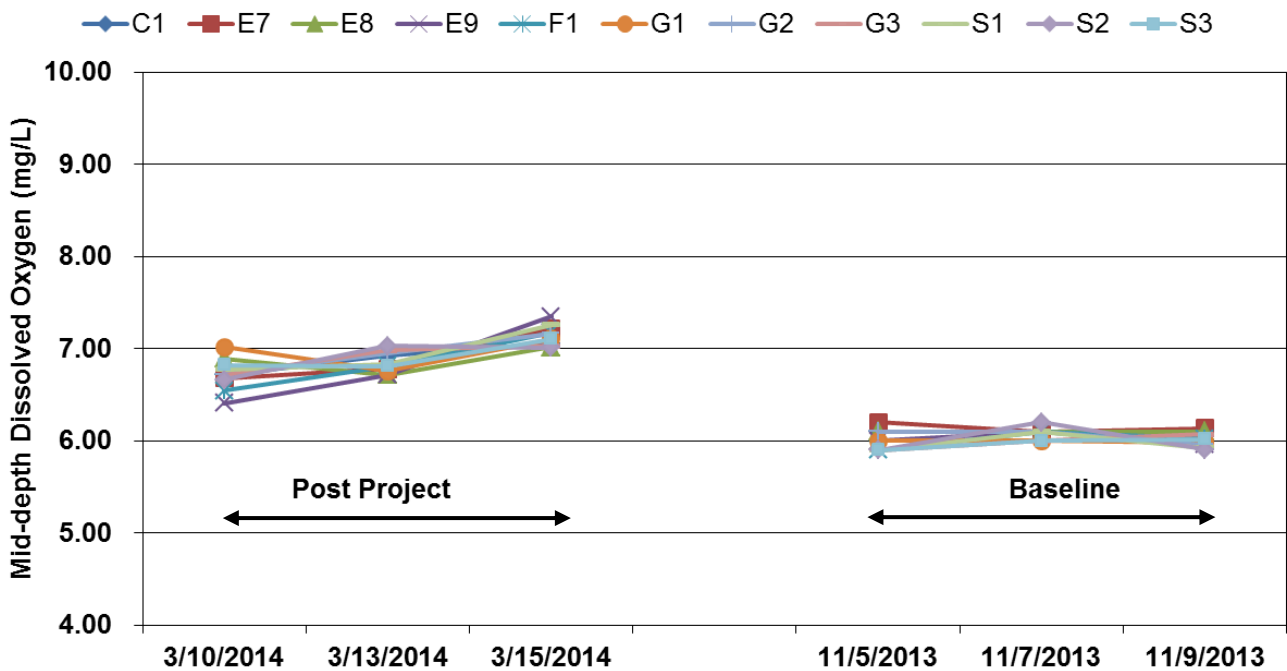
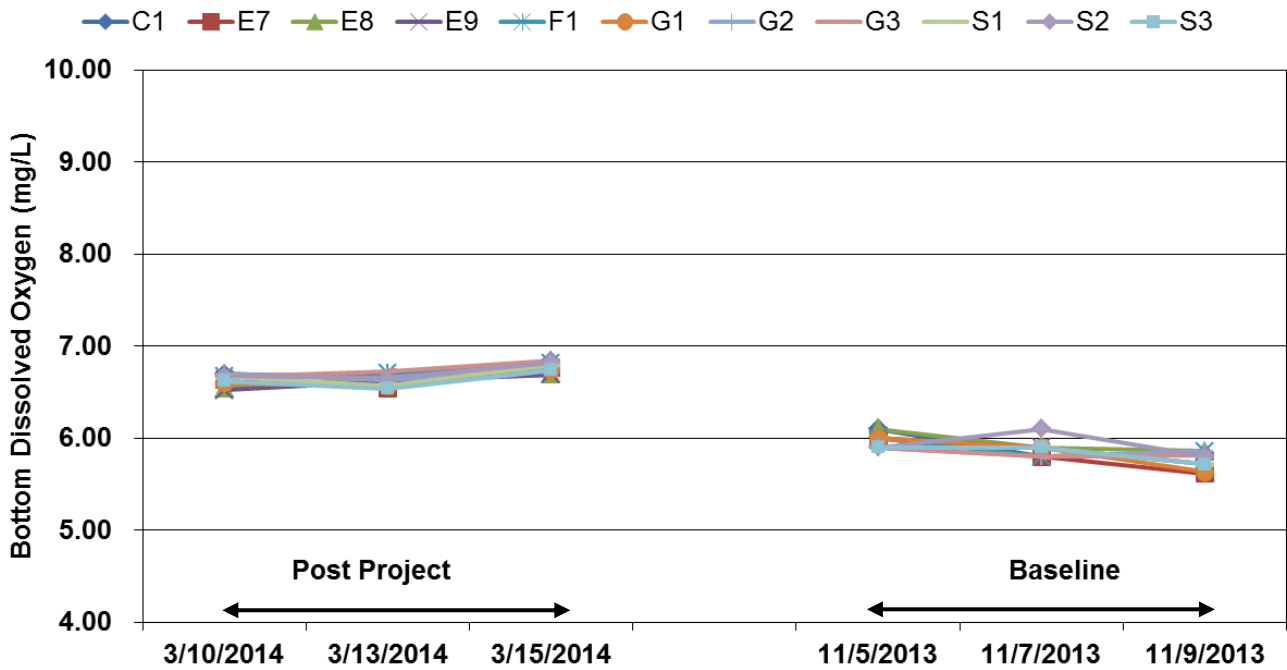


Figure D2 Dissolved oxygen (mg/L) at mid-depth of water column measured during the post-project monitoring period from 10 to 15 March 2014 for Zone A



Mid-ebb Dissolved Oxygen (Bottom)



Mid-flood Dissolved Oxygen (Bottom)

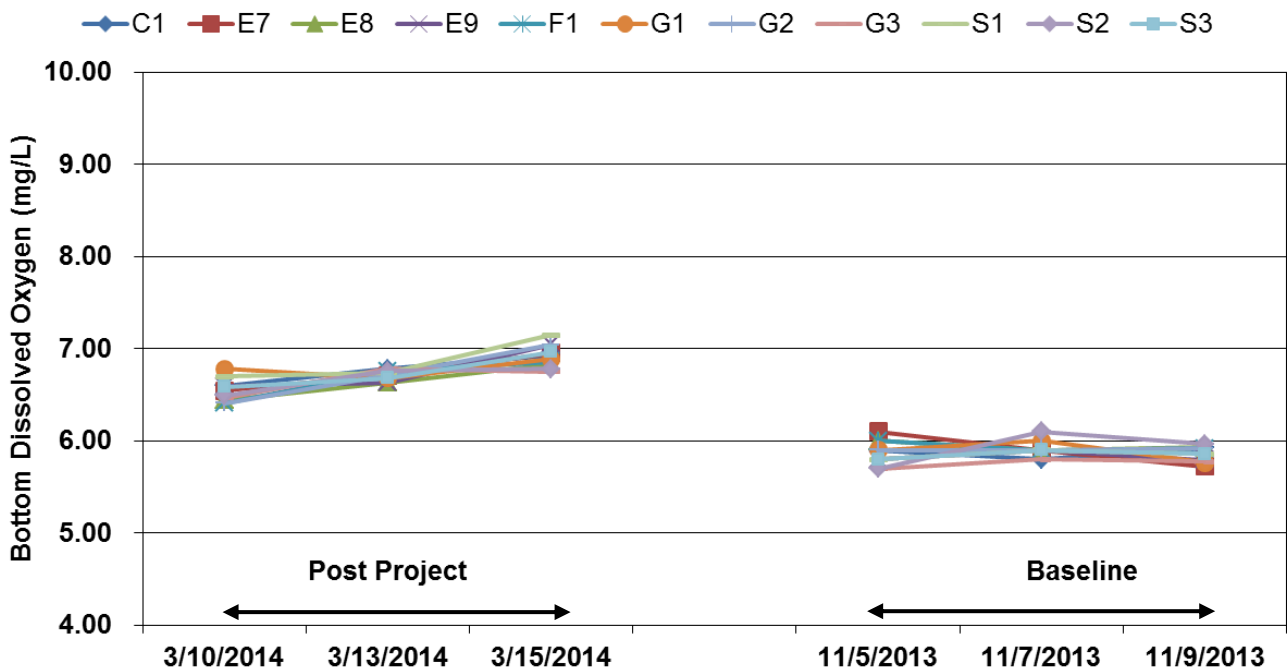
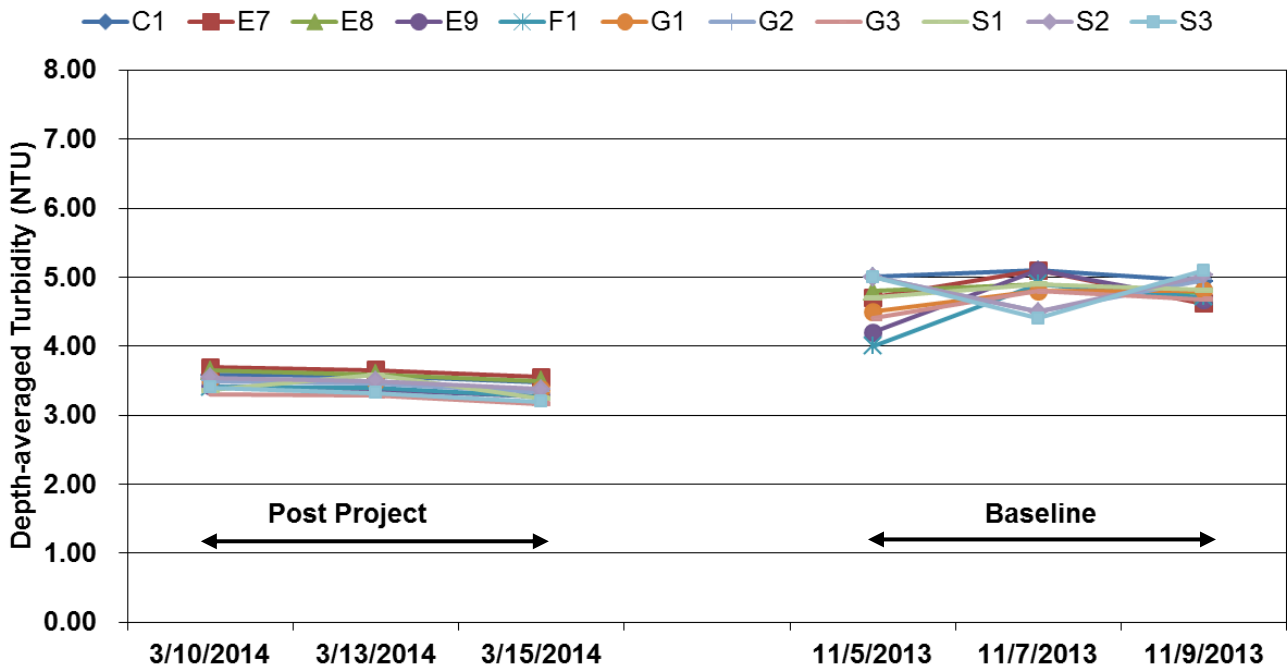


Figure D3 Dissolved oxygen (mg/L) at bottom of water column measured during the post-project monitoring period from 10 to 15 March 2014 for Zone A



Mid-ebb Turbidity (Depth-averaged)



Mid-flood Turbidity (Depth-averaged)

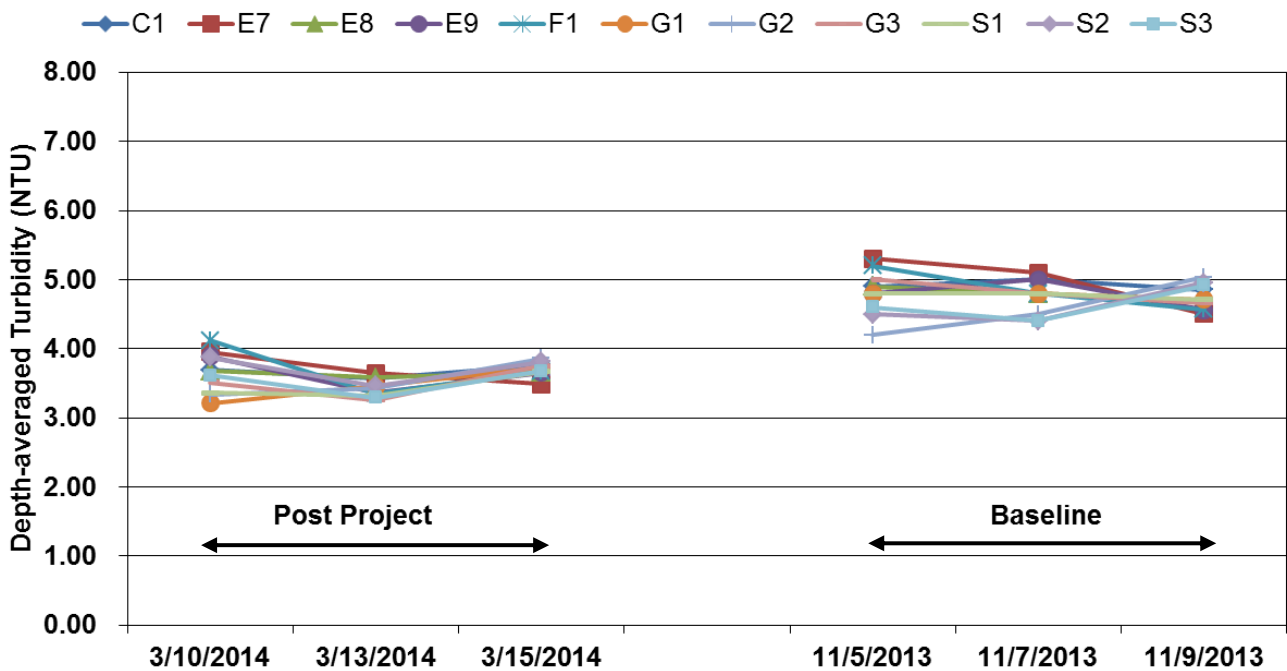
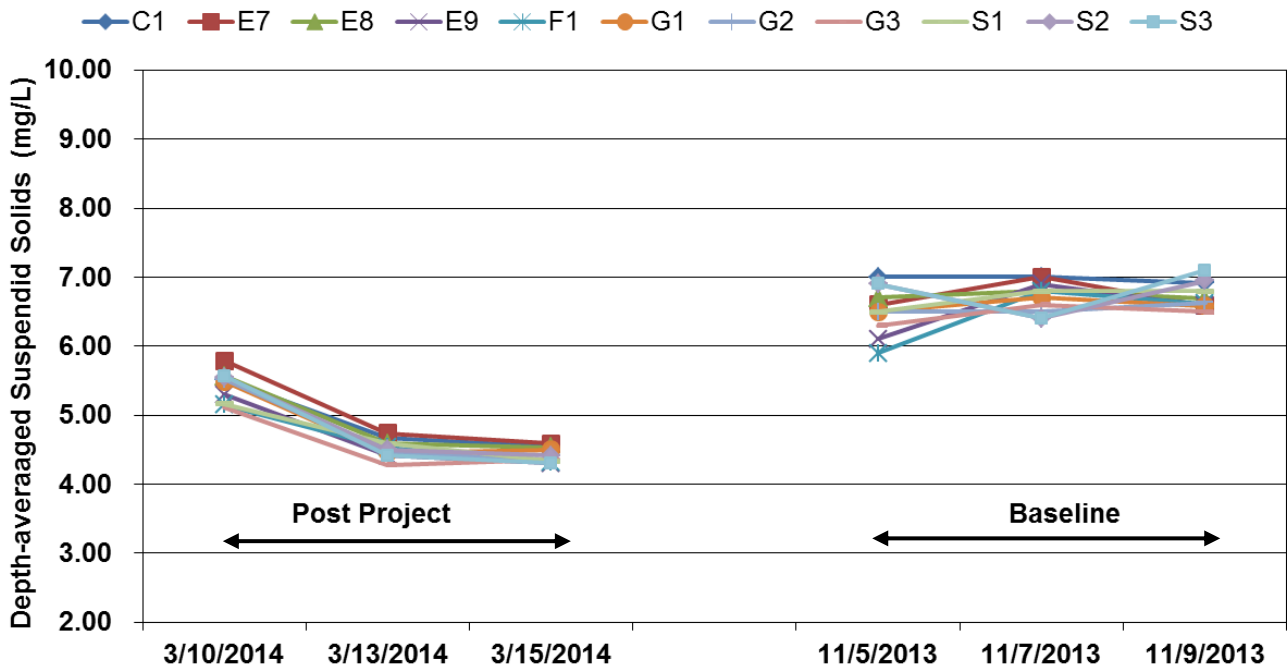


Figure D4 Depth-averaged turbidity (NTU) of water column measured during the post-project monitoring period from 10 to 15 March 2014 for Zone A



Mid-ebb Suspended Solids (Depth-averaged)



Mid-flood Suspended Solids (Depth-averaged)

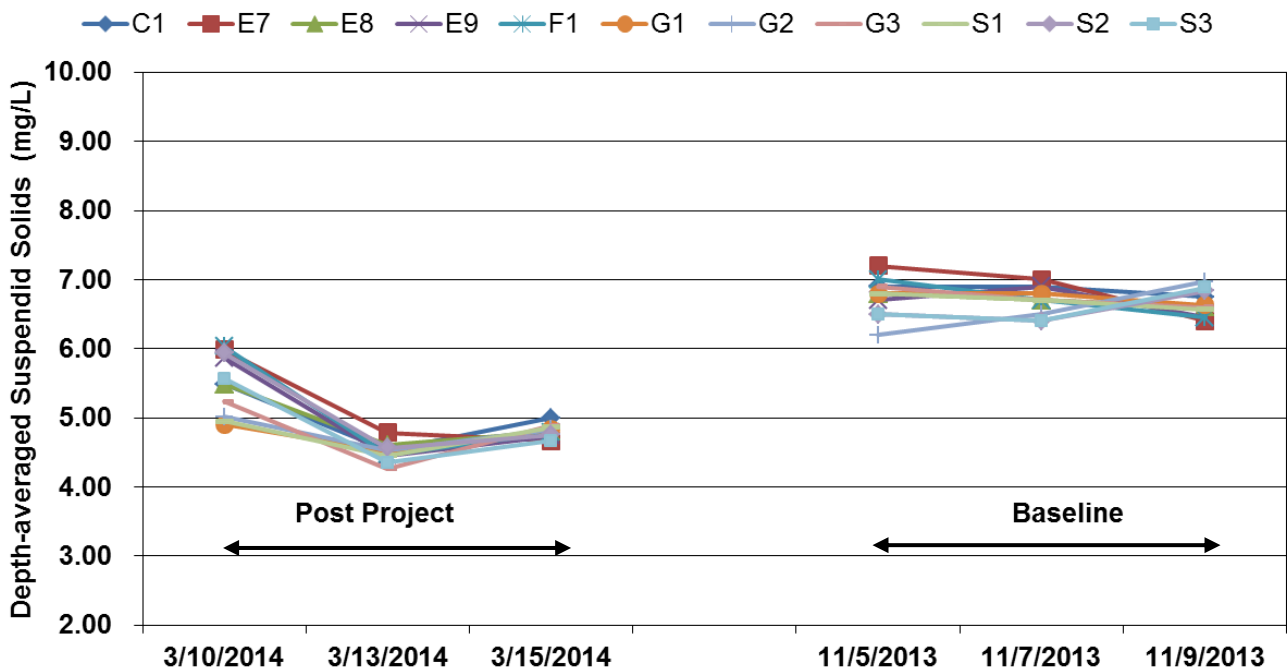


Figure D5 Depth-averaged suspended solid (mg/L) of water column measured during the post-project monitoring period from 10 to 15 March 2014 for Zone A



Date: 10-Mar-14
Tide: Mid-Flood
Weather: Cloudy
Sea Conditions: Small Wave
Zone A

Location	Sampling Time	Water Depth (m)	Current direction	Current speed (ms ⁻¹)	Monitoring Depth	Temperature (°C)			Salinity (ppt)			DO (mg/l)			DO Saturation (%)			Turbidity (NTU)				Suspended Solids (mg/l)			
						1	2	Ave.*	1	2	Ave.*	1	2	Ave.*	1	2	Ave.*	1	2	Ave.*	D.A.**	1	2	Ave.*	D.A.**
C1	0809-0817	36.8	W	0.2	Surface	16.7	16.8	16.8	29.6	29.5	29.6	7.1	7.1	7.1	87.0	87.2	87.1	3.4	3.3	3.3		5.0	5.0	5.0	
					Middle	16.8	16.7	16.8	29.6	29.7	29.7	6.7	6.7	6.7	83.3	82.7	83.0	3.7	3.7	3.7	3.7	5.5	5.5	5.5	5.5
					Bottom	16.7	16.6	16.7	29.8	29.8	29.8	6.6	6.6	6.6	81.4	81.7	81.6	4.0	4.0	4.0		5.9	6.0	6.0	
E8	0820-0828	18.4	W	0.3	Surface	16.6	16.7	16.7	29.5	29.6	29.6	7.0	6.9	7.0	86.8	85.6	86.2	3.4	3.5	3.5		5.1	5.1	5.1	
					Middle	16.7	16.6	16.7	29.6	29.7	29.7	6.9	6.9	6.9	85.0	85.4	85.2	3.7	3.6	3.6	3.7	5.4	5.3	5.4	5.5
					Bottom	16.6	16.5	16.6	29.9	29.8	29.9	6.5	6.4	6.4	79.7	79.6	79.7	4.0	3.9	4.0		5.9	6.1	6.0	
S1	0831-0839	9.6	W	0.4	Surface	16.7	16.6	16.7	29.6	29.5	29.6	7.0	7.0	7.0	86.3	86.8	86.6	3.0	3.0	3.0		4.4	4.5	4.5	
					Middle	16.5	16.6	16.6	26.6	29.6	28.1	6.8	6.8	6.8	83.9	83.6	83.8	3.2	3.3	3.2	3.4	4.7	4.8	4.8	5.0
					Bottom	16.5	16.6	16.6	29.8	29.7	29.8	6.7	6.7	6.7	83.1	82.6	82.9	3.8	3.8	3.8		5.7	5.6	5.7	
G1	0842-0850	12.4	W	0.3	Surface	16.7	16.7	16.7	29.7	29.6	29.7	6.8	6.8	6.8	83.6	83.9	83.8	3.0	3.0	3.0		4.6	4.6	4.6	
					Middle	16.7	16.6	16.7	29.7	29.8	29.8	7.0	7.0	7.0	86.8	87.0	86.9	3.1	3.1	3.1	3.2	4.8	4.8	4.8	4.9
					Bottom	16.6	16.7	16.7	29.8	29.9	29.9	6.8	6.8	6.8	83.8	84.1	84.0	3.6	3.5	3.5		5.4	5.2	5.3	
E7	0853-0901	13.6	W	0.3	Surface	16.8	16.7	16.8	29.6	29.7	29.7	7.0	6.9	6.9	86.0	85.8	85.9	3.1	3.1	3.1		4.5	4.6	4.6	
					Middle	16.7	16.6	16.7	29.8	29.7	29.8	6.7	6.7	6.7	82.6	82.8	82.7	4.3	4.3	4.3	4.0	6.4	6.6	6.5	6.0
					Bottom	16.7	16.8	16.8	29.8	29.9	29.9	6.5	6.6	6.5	81.0	81.2	81.1	4.4	4.4	4.4		6.8	7.0	6.9	
F1	0904-0912	12.8	W	0.4	Surface	16.8	16.9	16.9	29.7	29.8	29.8	7.0	7.0	7.0	86.3	86.1	86.2	3.2	3.2	3.2		4.6	4.7	4.7	
					Middle	16.8	16.7	16.8	29.7	29.7	29.7	6.5	6.6	6.5	80.9	81.1	81.0	4.5	4.5	4.5	4.1	6.3	6.5	6.4	6.0
					Bottom	16.7	16.7	16.7	29.8	29.7	29.8	6.4	6.4	6.4	79.3	79.6	79.5	4.7	4.7	4.7		7.1	7.0	7.1	
G3	0915-0923	16.4	W	0.3	Surface	16.7	16.6	16.7	29.6	29.6	29.6	6.9	6.9	6.9	84.7	85.1	84.9	2.9	3.0	2.9		4.3	4.3	4.3	
					Middle	16.7	16.8	16.8	29.6	29.7	29.7	6.7	6.7	6.7	82.9	83.3	83.1	3.2	3.2	3.2	3.5	4.8	5.0	4.9	5.2
					Bottom	16.8	16.7	16.8	29.8	29.7	29.8	6.5	6.5	6.5	80.0	80.2	80.1	4.4	4.4	4.4		6.4	6.6	6.5	
E9	0926-0934	13.8	W	0.2	Surface	16.7	16.7	16.7	29.7	29.7	29.7	6.8	6.8	6.8	83.7	84.1	83.9	3.2	3.2	3.2		4.6	4.8	4.7	
					Middle	16.7	16.6	16.7	29.6	29.7	29.7	6.4	6.4	6.4	79.7	79.0	79.4	4.3	4.4	4.4	3.9	6.3	6.5	6.4	5.9
					Bottom	16.6	16.5	16.6	29.8	29.8	29.8	6.6	6.6	6.6	81.7	81.4	81.6	4.1	4.2	4.1		6.4	6.6	6.5	
S2	0937-0945	12.4	W	0.3	Surface	16.7	16.8	16.8	29.6	29.5	29.6	6.9	7.0	7.0	86.0	86.7	86.4	3.6	3.6	3.6		5.2	5.4	5.3	
					Middle	16.7	16.6	16.7	29.6	29.7	29.7	6.6	6.7	6.7	82.0	82.9	82.5	4.1	4.1	4.1	3.9	6.3	6.4	6.4	5.9
					Bottom	16.6	16.5	16.6	29.7	29.8	29.8	6.5	6.5	6.5	80.7	80.2	80.5	4.0	3.9	3.9		6.2	6.1	6.2	
G2	0948-0956	14.2	W	0.3	Surface	16.8	16.7	16.8	29.7	29.6	29.7	7.0	7.0	7.0	86.8	87.0	86.9	2.9	2.9	2.9		4.2	4.4	4.3	
					Middle	16.7	16.6	16.7	29.7	29.8	29.8	6.7	6.7	6.7	83.4	83.0	83.2	3.0	3.1	3.0	3.3	4.6	4.7	4.7	5.0
					Bottom	16.6	16.7	16.7	29.8	29.7	29.8	6.4	6.4	6.4	79.7	79.1	79.4	4.1	4.0	4.0		6.2	6.0	6.0	
S3	0959-1004	12.2	W	0.4	Surface	16.7	16.6	16.7	29.6	29.5	29.6	7.1	7.0	7.1	87.3	87.2	87.3	3.2	3.2	3.2		5.0	4.9	5.0	
					Middle	16.6	16.5	16.6	29.6	29.7	29.7	6.8	6.8	6.8	84.4	84.5	84.5	3.6	3.6	3.6	3.6	5.7	5.5	5.6	5.6
					Bottom	16.6	16.6	16.6	29.7	29.8	29.8	6.6	6.6	6.6	81.2	81.9	81.6	4.1	4.0	4.0		6.1	6.2	6.2	

Remark or Observation:

Note: * Average

** Depth Average

Date: 10-Mar-14
Tide: Mid-Ebb
Weather: Cloudy
Sea Conditions: Calm
Zone A

Location	Sampling Time	Water Depth (m)	Current direction	Current speed (ms ⁻¹)	Monitoring Depth	Temperature (°C)			Salinity (ppt)			DO (mg/l)			DO Saturation (%)			Turbidity (NTU)				Suspended Solids (mg/l)			
						1	2	Ave.*	1	2	Ave.*	1	2	Ave.*	1	2	Ave.*	1	2	Ave.*	D.A.**	1	2	Ave.*	D.A.**
C1	1905-1922	36.6	W	0.2	Surface	16.8	16.8	16.8	29.7	29.7	29.7	6.9	6.9	6.9	85.7	85.8	85.8	3.5	3.5	3.5		5.0	5.2	5.1	
					Middle	16.8	16.8	16.8	29.7	29.7	29.7	6.8	6.8	6.8	84.4	84.5	84.5	3.6	3.6	3.6	3.6	5.5	5.6	5.6	5.5
					Bottom	16.7	16.7	16.7	29.8	29.8	29.8	6.7	6.7	6.7	82.8	82.6	82.7	3.7	3.7	3.7		5.8	6.0	5.9	
E8	1927-1938	18.2	W	0.2	Surface	16.7	16.7	16.7	29.6	29.6	29.6	6.9	6.9	6.9	85.0	84.9	85.0	3.5	3.5	3.5		5.2	5.2	5.2	
					Middle	16.8	16.8	16.8	29.7	29.7	29.7	6.7	6.7	6.7	82.7	82.7	82.7	3.7	3.7	3.7	3.6	5.7	5.6	5.7	5.6
					Bottom	16.7	16.8	16.8	29.8	29.8	29.8	6.5	6.6	6.5	80.7	80.8	80.8	3.7	3.8	3.7		5.8	5.9	5.9	
S1	1943-1955	9.4	W	0.3	Surface	16.7	16.7	16.7	29.7	29.7	29.7	6.9	6.9	6.9	84.9	84.8	84.9	3.3	3.3	3.3		4.8	5.0	4.9	
					Middle	16.8	16.8	16.8	29.8	29.8	29.8	6.7	6.7	6.7	83.1	83.2	83.2	3.4	3.4	3.4	3.4	5.2	5.2	5.2	5.2
					Bottom	16.8	16.8	16.8	29.9	29.9	29.9	6.7	6.7	6.7	82.4	82.3	82.4	3.5	3.5	3.5		5.4	5.4	5.4	
G1	2000-2011	12.2	W	0.2	Surface	16.8	16.8	16.8	29.7	29.7	29.7	6.8	6.8	6.8	83.9	83.8	83.9	3.3	3.3	3.3		5.1	5.2	5.2	
					Middle	16.8	16.8	16.8	29.8	29.8	29.8	6.7	6.7	6.7	82.4	82.5	82.5	3.5	3.5	3.5	3.5	5.4	5.5	5.5	5.5
					Bottom	16.9	16.9	16.9	29.8	29.8	29.8	6.6	6.6	6.6	81.5	81.8	81.7	3.7	3.8	3.7		5.9	5.8	5.9	
E7	2016-2027	12.4	W	0.2	Surface	16.7	16.7	16.7	29.6	29.6	29.6	6.8	6.8	6.8	84.3	84.4	84.4	3.6	3.6	3.6		5.4	5.6	5.5	
					Middle	16.8	16.8	16.8	29.8	29.8	29.8	6.7	6.7	6.7	83.2	83.3	83.3	3.7	3.7	3.7	3.7	5.8	5.9	5.9	5.8
					Bottom	16.8	16.8	16.8	29.8	29.8	29.8	6.6	6.6	6.6	81.9	82.0	82.0	3.8	3.8	3.8		6.0	6.0	6.0	
F1	2032-2044	12.6	W	0.3	Surface	16.8	16.8	16.8	29.7	29.7	29.7	6.9	6.8	6.8	84.7	84.6	84.7	3.3	3.3	3.3		4.6	4.8	4.7	
					Middle	16.8	16.7	16.8	29.8	29.8	29.8	6.7	6.8	6.7	83.3	83.4	83.4	3.4	3.4	3.4	3.4	5.1	5.2	5.2	5.2
					Bottom	16.7	16.7	16.7	29.8	29.8	29.8	6.7	6.7	6.7	82.3	82.4	82.4	3.6	3.6	3.6		5.6	5.6	5.6	
G3	2049-2100	16.2	W	0.3	Surface	16.7	16.8	16.8	29.7	29.7	29.7	6.9	6.9	6.9	85.4	85.5	85.5	3.0	3.0	3.0		4.4	4.5	4.5	
					Middle	16.8	16.8	16.8	29.8	29.8	29.8	6.8	6.8	6.8	84.4	84.2	84.3	3.3	3.4	3.3	3.3	5.2	5.4	5.3	5.1
					Bottom	16.8	16.7	16.8	29.8	29.8	29.8	6.7	6.7	6.7	82.4	82.1	82.3	3.6	3.6	3.6		5.6	5.6	5.6	
E9	2105-2116	13.6	W	0.3	Surface	16.7	16.7	16.7	29.8	29.8	29.8	6.7	6.7	6.7	82.4	82.5	82.5	3.3	3.3	3.3		5.0	5.0	5.0	
					Middle	16.8	16.8	16.8	29.8	29.9	29.9	6.6	6.6	6.6	81.9	82.0	82.0	3.4	3.4	3.4	3.4	5.2	5.4	5.3	5.3
					Bottom	16.8	16.7	16.8	29.8	29.9	29.9	6.5	6.5	6.5	80.7	80.3	80.5	3.6	3.6	3.6		5.6	5.6	5.6	
S2	2121-2132	12.3	W	0.2	Surface	16.7	16.7	16.7	29.6	29.6	29.6	6.8	6.8	6.8	84.0	84.2	84.1	3.4	3.4	3.4		5.3	5.3	5.3	
					Middle	16.8	16.7	16.8	29.7	29.8	29.8	6.9	6.9	6.9	85.3	85.2	85.3	3.5	3.5	3.5	3.5	5.5	5.5	5.5	5.6
					Bottom	16.8	16.8	16.8	29.8	29.8	29.8	6.7	6.7	6.7	82.4	82.5	82.5	3.7	3.7	3.7		5.8	5.9	5.9	
G2	2137-2148	14.0	W	0.2	18	16.7	16.8	16.8	29.7	29.7	29.7	6.9	6.9	6.9	85.4	85.5	85.5	3.3	3.3	3.3		5.1	5.2	5.2	
					18.1	16.7	16.8	16.8	29.8	29.8	29.8	6.8	6.8	6.8	84.0	84.0	84.0	3.5	3.5	3.5	3.5	5.4	5.4	5.4	5.5
					18.1	16.8	16.8	16.8	29.8	29.8	29.8	6.7	6.7	6.7	82.7	82.9	82.8	3.7	3.7	3.7		6.0	6.0	6.0	
S3	2153-2205	12.0	W	0.3	Surface	16.8	16.8	16.8	29.7	29.7	29.7	6.9	6.9	6.9	84.8	84.9	84.9	3.3	3.3	3.3		5.0	5.4	5.2	
					Middle	16.7	16.8	16.8	29.8	29.8	29.8	6.7	6.8	6.7	83.2	83.4	83.3	3.4	3.4	3.4	3.4	5.6	5.6	5.6	5.6
					Bottom	16.8	16.8	16.8	29.8	29.8	29.8	6.6	6.6	6.6	81.8	81.8	81.8	3.6	3.6	3.6		5.8	6.0	5.9	

Remark or Observation:

Note: * Average

** Depth Average

Date: 13-Mar-14
Tide: Mid-Flood
Weather: Cloudy
Sea Conditions: Calm
Zone A

Location	Sampling Time	Water Depth (m)	Current direction	Current speed (ms ⁻¹)	Monitoring Depth	Temperature (°C)			Salinity (ppt)			DO (mg/l)			DO Saturation (%)			Turbidity (NTU)				Suspended Solids (mg/l)			
						1	2	Ave.*	1	2	Ave.*	1	2	Ave.*	1	2	Ave.*	1	2	Ave.*	D.A.**	1	2	Ave.*	D.A.**
C1	1426-1441	36.9	W	0.3	Surface	17.0	17.1	17.1	29.7	29.7	29.7	7.0	7.1	7.0	86.9	87.1	87.0	3.4	3.4	3.4		4.4	4.4	4.4	
					Middle	17.1	17.2	17.2	29.8	29.9	29.9	6.9	6.9	6.9	85.7	86.0	85.9	3.6	3.6	3.6	3.6	4.5	4.6	4.6	4.5
					Bottom	17.3	17.4	17.4	29.9	29.9	29.9	6.8	6.8	6.8	84.1	84.3	84.2	3.7	3.7	3.7		4.7	4.6	4.7	
E8	1446-1500	18.4	W	0.2	Surface	17.0	17.0	17.0	29.7	29.8	29.8	7.0	7.0	7.0	86.1	86.3	86.2	3.4	3.5	3.4		4.4	4.6	4.5	
					Middle	17.1	17.2	17.2	29.8	29.8	29.8	6.7	6.7	6.7	83.4	83.6	83.5	3.6	3.6	3.6	3.6	4.7	4.5	4.6	4.6
					Bottom	17.2	17.3	17.3	29.9	29.8	29.9	6.6	6.6	6.6	82.2	82.5	82.4	3.7	3.7	3.7		4.6	4.8	4.7	
S1	1505-1519	9.6	W	0.2	Surface	17.0	17.1	17.1	29.7	29.7	29.7	6.9	6.9	6.9	85.6	85.3	85.5	3.2	3.2	3.2		4.3	4.4	4.4	
					Middle	17.2	17.3	17.3	29.7	29.8	29.8	6.8	6.8	6.8	84.6	84.9	84.8	3.3	3.3	3.3	3.3	4.4	4.5	4.5	4.5
					Bottom	17.3	17.4	17.4	29.9	29.8	29.9	6.7	6.8	6.7	83.6	83.9	83.8	3.4	3.4	3.4		4.6	4.5	4.6	
G1	1524-1538	12.4	W	0.3	Surface	17.0	17.0	17.0	29.7	29.7	29.7	6.9	6.9	6.9	85.1	84.9	85.0	3.2	3.3	3.3		4.4	4.2	4.3	
					Middle	17.1	17.2	17.2	29.8	29.8	29.8	6.8	6.8	6.8	83.7	83.9	83.8	3.4	3.4	3.4	3.5	4.4	4.6	4.5	4.5
					Bottom	17.2	17.3	17.3	29.9	29.9	29.9	6.7	6.7	6.7	82.8	83.1	83.0	3.7	3.7	3.7		4.7	4.8	4.8	
E7	1543-1557	12.6	W	0.3	Surface	17.0	17.0	17.0	29.6	29.7	29.7	6.9	6.9	6.9	85.2	85.5	85.4	3.5	3.5	3.5		4.8	4.6	4.7	
					Middle	17.1	17.2	17.2	29.7	29.7	29.7	6.8	6.8	6.8	83.9	84.1	84.0	3.6	3.7	3.6	3.6	4.7	4.9	4.8	4.8
					Bottom	17.3	17.4	17.4	29.8	29.9	29.9	6.7	6.7	6.7	83.2	83.4	83.3	3.8	3.8	3.8		4.8	4.9	4.9	
F1	1602-1616	12.8	W	0.2	Surface	17.0	17.1	17.1	29.6	29.6	29.6	6.9	7.0	7.0	85.8	86.0	85.9	3.2	3.2	3.2		4.3	4.2	4.3	
					Middle	17.2	17.3	17.3	29.7	29.8	29.8	6.8	6.8	6.8	84.3	84.5	84.4	3.3	3.3	3.3	3.4	4.5	4.4	4.5	4.5
					Bottom	17.4	17.5	17.5	29.8	29.9	29.9	6.8	6.8	6.8	83.8	84.0	84.0	3.5	3.5	3.5		4.6	4.8	4.7	
G3	1621-1636	16.4	W	0.3	Surface	17.0	17.0	17.0	29.6	29.7	29.7	7.0	7.1	7.1	87.1	87.3	87.2	2.9	3.0	3.0		3.8	4.0	3.9	
					Middle	17.1	17.2	17.2	29.7	29.7	29.7	7.0	7.0	7.0	86.4	86.6	86.5	3.3	3.3	3.3	3.3	4.2	4.4	4.3	4.3
					Bottom	17.3	17.4	17.4	29.8	29.7	29.8	6.8	6.8	6.8	84.1	84.3	84.2	3.5	3.5	3.5		4.6	4.6	4.6	
E9	1641-1656	13.8	W	0.3	Surface	17.0	17.1	17.1	29.6	29.7	29.7	6.8	6.8	6.8	84.0	84.2	84.1	3.2	3.2	3.2		4.2	4.3	4.3	
					Middle	17.2	17.2	17.2	29.8	29.7	29.8	6.7	6.7	6.7	83.5	83.3	83.4	3.4	3.3	3.3	3.4	4.4	4.5	4.5	4.5
					Bottom	17.3	17.3	17.3	29.9	29.9	29.9	6.6	6.6	6.6	88.2	88.4	88.3	3.5	3.5	3.5		4.6	4.7	4.7	
S2	1701-1716	12.5	W	0.2	Surface	17.0	17.1	17.1	29.6	29.7	29.7	6.9	6.9	6.9	85.1	85.3	85.2	3.3	3.4	3.4		4.3	4.4	4.4	
					Middle	17.1	17.2	17.2	29.7	29.8	29.8	7.0	7.0	7.0	87.0	87.3	87.2	3.4	3.5	3.4	3.5	4.5	4.5	4.5	4.6
					Bottom	17.3	17.4	17.4	29.8	29.9	29.9	6.8	6.8	6.8	84.1	83.9	84.0	3.6	3.6	3.6		4.8	4.9	4.9	
G2	1721-1736	14.3	W	0.2	Surface	17.0	17.0	17.0	29.6	29.6	29.6	7.1	7.1	7.1	87.7	87.9	87.8	3.2	3.3	3.3		4.2	4.5	4.4	
					Middle	17.1	17.1	17.1	29.7	29.6	29.7	6.9	7.0	7.0	86.1	86.3	86.2	3.4	3.4	3.4	3.4	4.4	4.6	4.5	4.5
					Bottom	17.2	17.3	17.3	29.8	29.8	29.8	6.7	6.7	6.7	83.5	83.3	83.4	3.7	3.7	3.7		4.7	4.8	4.8	
S3	1741-1756	12.3	W	0.2	Surface	17.0	17.1	17.1	29.6	29.6	29.6	7.0	7.0	7.0	86.0	86.3	86.2	3.2	3.2	3.2		4.2	4.2	4.2	
					Middle	17.2	17.2	17.2	29.7	29.7	29.7	6.8	6.8	6.8	84.3	84.5	84.4	3.2	3.3	3.3	3.3	4.3	4.3	4.3	4.4
					Bottom	17.3	17.4	17.4	29.8	29.8	29.8	6.7	6.7	6.7	82.8	83.1	83.0	3.4	3.4	3.4		4.5	4.6	4.6	

Remark or Observation:

Note: * Average

** Depth Average

Date: 13-Mar-14
Tide: Mid-Ebb
Weather: Cloudy
Sea Conditions: Calm
Zone A

Location	Sampling Time	Water Depth (m)	Current direction	Current speed (ms ⁻¹)	Monitoring Depth	Temperature (°C)			Salinity (ppt)			DO (mg/l)			DO Saturation (%)			Turbidity (NTU)				Suspended Solids (mg/l)			
						1	2	Ave.*	1	2	Ave.*	1	2	Ave.*	1	2	Ave.*	1	2	Ave.*	D.A.**	1	2	Ave.*	D.A.**
C1	0915-0926	36.2	W	0.3	Surface	17.2	17.1	17.2	29.9	29.8	29.9	7.0	7.0	7.0	84.5	84.2	84.4	3.4	3.4	3.4	3.6	4.4	4.7	4.6	4.7
					Middle	17.3	17.2	17.3	29.8	29.8	29.8	6.9	6.8	6.8	82.2	81.9	82.1	3.6	3.6	3.6	3.6	4.8	4.6	4.7	4.7
					Bottom	17.2	17.4	17.3	29.9	29.9	29.9	6.6	6.7	6.6	79.7	80.2	80.0	3.7	3.7	3.7	3.6	4.7	4.8	4.8	4.8
E8	0932-0943	18.1	W	0.3	Surface	17.1	17.0	17.1	29.8	29.6	29.7	6.9	6.9	6.9	82.6	82.4	82.5	3.4	3.5	3.4	3.6	4.3	4.2	4.3	4.6
					Middle	17.3	17.2	17.3	29.9	29.9	29.9	6.7	6.8	6.8	81.1	81.5	81.3	3.6	3.7	3.7	3.6	4.7	4.8	4.8	4.6
					Bottom	17.2	17.2	17.2	29.8	29.9	29.9	6.6	6.7	6.7	79.8	80.4	80.1	3.7	3.7	3.7	3.6	4.7	4.8	4.8	4.6
S1	0949-0959	9.3	W	0.3	Surface	17.1	17.2	17.2	29.9	29.8	29.9	6.9	6.9	6.9	82.8	82.9	82.9	3.4	3.4	3.4	3.6	4.6	4.5	4.6	4.6
					Middle	17.3	17.2	17.3	29.8	29.8	29.8	6.7	6.7	6.7	80.3	80.1	80.2	3.6	3.6	3.6	3.6	4.4	4.6	4.5	4.6
					Bottom	17.4	17.4	17.4	29.9	29.9	29.9	6.6	6.6	6.6	79.1	79.3	79.2	3.7	3.7	3.7	3.6	4.6	4.8	4.7	4.6
G1	1005-1016	12.1	W	0.3	Surface	17.1	17.0	17.1	29.8	29.8	29.8	6.8	6.8	6.8	81.2	81.4	81.3	3.3	3.3	3.3	3.5	4.3	4.2	4.3	4.5
					Middle	17.2	17.3	17.3	29.9	29.8	29.9	6.7	6.7	6.7	80.7	80.4	80.6	3.5	3.4	3.4	3.5	4.6	4.3	4.5	4.5
					Bottom	17.4	17.3	17.4	29.7	29.8	29.8	6.5	6.6	6.6	78.8	79.4	79.1	3.7	3.7	3.7	3.5	4.8	4.5	4.7	4.5
E7	1022-1035	12.3	W	0.3	Surface	17.1	17.2	17.2	29.7	29.6	29.7	6.8	6.8	6.8	82.2	81.8	82.0	3.5	3.5	3.5	3.7	4.6	4.8	4.7	4.7
					Middle	17.3	17.4	17.4	29.7	29.7	29.7	6.7	6.7	6.7	80.7	80.8	80.8	3.6	3.7	3.7	3.7	4.7	4.9	4.8	4.7
					Bottom	17.4	17.4	17.4	29.9	29.8	29.9	6.5	6.6	6.5	78.5	79.1	78.8	3.8	3.8	3.8	3.7	4.6	4.8	4.7	4.7
F1	1040-1050	12.4	W	0.2	Surface	17.0	17.2	17.1	29.8	29.7	29.8	6.8	6.8	6.8	82.3	82.4	82.4	3.3	3.3	3.3	3.4	4.5	4.6	4.6	4.5
					Middle	17.3	17.4	17.4	29.7	29.8	29.8	6.8	6.8	6.8	84.1	81.3	82.7	3.3	3.3	3.3	3.4	4.4	4.3	4.4	4.5
					Bottom	17.2	17.4	17.3	29.9	29.8	29.9	6.7	6.7	6.7	83.3	83.2	83.3	3.5	3.6	3.5	3.4	4.6	4.8	4.7	4.5
G3	1056-1108	16.0	W	0.3	Surface	17.2	17.1	17.2	29.7	29.7	29.7	7.0	7.0	7.0	86.7	86.6	86.6	3.0	3.0	3.0	3.3	3.8	4.0	3.9	4.3
					Middle	17.4	17.3	17.4	29.8	29.7	29.8	6.9	6.9	6.9	85.1	85.2	85.2	3.3	3.3	3.3	3.3	4.3	4.4	4.4	4.4
					Bottom	17.5	17.4	17.5	29.8	29.8	29.8	6.7	6.7	6.7	83.7	83.3	83.5	3.5	3.6	3.6	3.3	4.6	4.6	4.6	4.3
E9	1115--1127	13.6	W	0.3	Surface	17.2	17.1	17.2	29.8	29.7	29.8	6.7	6.7	6.7	83.0	83.4	83.2	3.2	3.2	3.2	3.4	4.2	4.3	4.3	4.4
					Middle	17.3	17.3	17.3	29.9	29.8	29.9	6.7	6.6	6.6	82.5	82.1	82.3	3.4	3.4	3.4	3.4	4.4	4.2	4.3	4.4
					Bottom	17.5	17.4	17.5	29.9	29.9	29.9	6.6	6.6	6.6	82.5	82.0	82.3	3.5	3.5	3.5	3.4	4.6	4.8	4.7	4.4
S2	1132-1143	12.1	W	0.2	Surface	17.2	17.1	17.2	29.7	29.7	29.7	6.8	6.7	6.7	83.7	83.1	83.4	3.4	3.4	3.4	3.5	4.4	4.3	4.4	4.5
					Middle	17.3	17.2	17.3	29.8	29.9	29.9	6.9	6.9	6.9	85.2	85.6	85.4	3.5	3.5	3.5	3.5	4.5	4.6	4.6	4.5
					Bottom	17.4	17.5	17.5	29.9	29.8	29.9	6.7	6.6	6.7	82.7	82.5	82.6	3.6	3.6	3.6	3.5	4.7	4.5	4.6	4.5
G2	1149-1205	14.0	W	0.2	Surface	17.2	17.1	17.2	29.6	29.7	29.7	7.0	7.0	7.0	86.3	86.2	86.3	3.3	3.3	3.3	3.5	4.4	4.2	4.3	4.5
					Middle	17.3	17.2	17.3	29.7	29.8	29.8	6.8	6.8	6.8	84.4	84.7	84.6	3.4	3.4	3.4	3.5	4.3	4.4	4.4	4.5
					Bottom	17.4	17.5	17.5	29.8	29.8	29.8	6.7	6.6	6.6	82.6	82.2	82.4	3.7	3.7	3.7	3.5	4.7	4.8	4.8	4.5
S3	1212-1230	12.0	W	0.2	Surface	17.2	17.1	17.2	29.7	29.6	29.7	6.9	6.9	6.9	85.1	84.9	85.0	3.2	3.2	3.2	3.3	4.4	4.2	4.3	4.4
					Middle	17.2	17.4	17.3	29.8	29.9	29.9	6.7	6.7	6.7	83.2	83.6	83.4	3.3	3.3	3.3	3.3	4.3	4.4	4.4	4.4
					Bottom	17.5	17.4	17.5	29.9	29.9	29.9	6.5	6.6	6.5	81.0	81.5	81.3	3.5	3.5	3.5	3.3	4.6	4.6	4.6	4.4

Remark or Observation:

Note: * Average

** Depth Average

Date: 15-Mar-14
Tide: Mid-Flood
Weather: Cloudy
Sea Conditions: Small Wave
Zone A

Location	Sampling Time	Water Depth (m)	Current direction	Current speed (ms ⁻¹)	Monitoring Depth	Temperature (°C)			Salinity (ppt)			DO (mg/l)			DO Saturation (%)			Turbidity (NTU)				Suspended Solids (mg/l)			
						1	2	Ave.*	1	2	Ave.*	1	2	Ave.*	1	2	Ave.*	1	2	Ave.*	D.A.**	1	2	Ave.*	D.A.**
C1	1551-1606	36.8	E	0.4	Surface	17.0	17.1	17.1	29.5	29.6	29.6	7.3	7.3	7.3	89.9	90.2	90.1	3.7	3.8	3.8		5.0	5.0	5.0	
					Middle	17.2	17.3	17.3	29.7	29.7	29.7	7.0	7.1	7.1	87.0	87.4	87.2	3.9	4.0	4.0	3.8	5.2	5.3	5.3	5.0
					Bottom	17.4	17.3	17.4	29.7	29.8	29.8	6.9	6.9	6.9	85.5	85.8	85.7	3.6	3.6	3.6		4.7	4.8	4.8	
E8	1611-1626	15.8	E	0.3	Surface	17.1	17.1	17.1	29.4	29.5	29.5	7.1	7.1	7.1	87.9	87.7	87.8	3.4	3.3	3.4		4.5	4.6	4.6	
					Middle	17.2	17.2	17.2	29.6	29.6	29.6	7.0	7.0	7.0	86.6	86.8	86.7	3.7	3.7	3.7	3.7	4.7	4.8	4.8	4.8
					Bottom	17.3	17.2	17.3	29.7	29.7	29.7	6.8	6.9	6.8	84.2	84.6	84.4	3.9	3.9	3.9		5.0	5.2	5.1	
S1	1631-1646	9.8	E	0.3	Surface	17.0	17.0	17.0	29.5	29.5	29.5	7.4	7.5	7.5	91.6	92.4	92.0	3.4	3.4	3.4		4.6	4.8	4.7	
					Middle	17.1	17.2	17.2	29.6	29.6	29.6	7.2	7.3	7.3	89.4	89.9	89.7	3.7	3.7	3.7	3.7	4.8	4.9	4.9	4.9
					Bottom	17.3	17.3	17.3	29.7	29.7	29.7	7.1	7.2	7.2	88.0	88.5	88.3	3.9	3.9	3.9		5.0	5.1	5.1	
G1	1651-1706	12.4	E	0.2	Surface	17.1	17.0	17.1	29.4	29.4	29.4	7.3	7.3	7.3	90.1	90.3	90.2	3.7	3.6	3.6		4.8	4.8	4.8	
					Middle	17.2	17.1	17.2	29.5	29.6	29.6	7.1	7.1	7.1	87.9	87.6	87.8	3.8	3.8	3.8	3.7	5.0	4.8	4.9	4.8
					Bottom	17.3	17.2	17.3	29.7	29.7	29.7	6.9	6.9	6.9	84.9	85.2	85.1	3.7	3.7	3.7		4.7	4.9	4.8	
E7	1711-1726	13.0	E	0.2	Surface	17.1	17.1	17.1	29.5	29.6	29.6	7.3	7.3	7.3	89.9	90.2	90.1	3.3	3.2	3.3		4.3	4.5	4.4	
					Middle	17.2	17.2	17.2	29.7	29.7	29.7	7.2	7.2	7.2	89.3	89.0	89.2	3.6	3.5	3.5	3.5	4.7	4.6	4.7	4.7
					Bottom	17.3	17.3	17.3	29.8	29.7	29.8	6.9	7.0	7.0	85.6	86.1	85.9	3.7	3.6	3.7		4.9	5.0	5.0	
F1	1731-1746	13.4	E	0.3	Surface	17.2	17.1	17.2	29.5	29.5	29.5	7.3	7.4	7.4	90.6	91.1	90.9	3.4	3.5	3.5		4.6	4.5	4.6	
					Middle	17.2	17.3	17.3	29.6	29.6	29.6	7.2	7.2	7.2	88.5	88.8	88.7	3.7	3.7	3.7	3.7	4.8	4.7	4.8	4.8
					Bottom	17.3	17.4	17.4	29.7	29.7	29.7	6.9	6.8	6.9	84.9	84.5	84.7	3.9	3.8	3.8		5.0	5.1	5.1	
G3	1750-1806	16.8	E	0.3	Surface	17.2	17.2	17.2	29.6	29.6	29.6	7.2	7.2	7.2	88.5	88.8	88.7	3.8	3.7	3.8		4.9	4.8	4.9	
					Middle	17.3	17.2	17.3	29.7	29.7	29.7	7.1	7.0	7.0	87.1	86.6	86.9	3.9	4.0	4.0	3.8	5.0	5.2	5.1	4.9
					Bottom	17.3	17.3	17.3	29.7	29.8	29.8	6.7	6.8	6.8	82.9	83.7	83.3	3.5	3.6	3.6		4.6	4.8	4.7	
E9	1811-1824	14.0	E	0.2	Surface	17.1	17.1	17.1	29.6	29.6	29.6	7.4	7.4	7.4	91.6	91.4	91.5	3.3	3.4	3.4		4.2	4.4	4.3	
					Middle	17.2	17.2	17.2	29.7	29.7	29.7	7.3	7.4	7.4	90.6	90.9	90.8	3.6	3.7	3.7	3.7	4.7	4.8	4.8	4.7
					Bottom	17.3	17.3	17.3	29.7	29.7	29.7	7.1	7.0	7.1	87.3	86.8	87.1	3.9	4.0	4.0		5.2	5.1	5.2	
S2	1826-1841	12.8	E	0.4	Surface	17.1	17.1	17.1	29.5	29.5	29.5	7.2	7.1	7.2	88.5	88.0	88.3	3.6	3.6	3.6		4.4	4.5	4.5	
					Middle	17.2	17.2	17.2	29.7	29.7	29.7	7.0	7.0	7.0	86.4	86.7	86.6	3.8	3.9	3.9	3.8	4.8	4.7	4.8	4.8
					Bottom	17.3	17.3	17.3	29.7	29.8	29.8	6.8	6.8	6.8	83.5	83.9	83.7	3.9	4.0	3.9		5.0	5.1	5.1	
G2	1846-1901	14.0	E	0.3	Surface	17.1	17.1	17.1	29.6	29.6	29.6	7.5	7.5	7.5	93.0	92.6	92.8	3.8	3.7	3.8		4.7	4.6	4.7	
					Middle	17.2	17.2	17.2	29.7	29.7	29.7	7.2	7.2	7.2	88.3	88.7	88.5	4.0	3.9	3.9	3.9	5.0	5.1	5.1	4.8
					Bottom	17.3	17.3	17.3	29.7	29.8	29.8	7.0	7.1	7.0	86.6	87.3	87.0	3.8	3.9	3.9		4.8	4.8	4.8	
S3	1906-1921	12.0	E	0.2	Surface	17.1	17.1	17.1	29.6	29.6	29.6	7.4	7.4	7.4	91.1	91.3	91.2	3.4	3.5	3.5		4.2	4.3	4.3	
					Middle	17.3	17.2	17.3	29.7	29.7	29.7	7.1	7.1	7.1	87.9	87.6	87.8	3.7	3.8	3.8	3.7	4.8	4.6	4.7	4.7
					Bottom	17.3	17.3	17.3	29.7	29.8	29.8	6.9	7.0	7.0	85.7	86.3	86.0	3.8	3.8	3.8		4.9	5.2	5.1	

Remark or Observation:

Note: * Average

** Depth Average

Date: 15-Mar-14
Tide: Mid-Ebb
Weather: Cloudy
Sea Conditions: Calm
Zone A

Location	Sampling Time	Water Depth (m)	Current direction	Current speed (ms ⁻¹)	Monitoring Depth	Temperature (°C)			Salinity (ppt)			DO (mg/l)			DO Saturation (%)			Turbidity (NTU)				Suspended Solids (mg/l)			
						1	2	Ave.*	1	2	Ave.*	1	2	Ave.*	1	2	Ave.*	1	2	Ave.*	D.A.**	1	2	Ave.*	D.A.**
C1	0958-1013	36.4	W	0.3	Surface	17.1	17.2	17.2	29.6	29.5	29.6	7.1	7.1	7.1	87.6	87.9	87.8	3.3	3.3	3.3		4.4	4.4	4.4	
					Middle	17.3	17.2	17.3	29.6	29.7	29.7	7.0	7.0	7.0	86.4	86.6	86.5	3.5	3.6	3.5	3.5	4.5	4.6	4.6	4.6
					Bottom	17.4	17.3	17.4	29.8	29.7	29.8	6.8	6.9	6.8	84.8	85.0	84.9	3.6	3.6	3.6		4.6	4.8	4.7	
E8	1018-1032	15.2	W	0.2	Surface	17.1	17.0	17.1	29.6	29.7	29.7	7.0	7.0	7.0	86.8	87.0	86.9	3.3	3.4	3.4		4.3	4.2	4.3	
					Middle	17.2	17.1	17.2	29.7	29.8	29.8	6.8	6.8	6.8	84.1	84.3	84.2	3.5	3.5	3.5	3.5	4.7	4.6	4.7	4.5
					Bottom	17.4	17.4	17.4	29.8	29.8	29.8	6.7	6.7	6.7	82.9	83.1	83.0	3.6	3.6	3.6		4.6	4.8	4.7	
S1	1037-1052	9.2	W	0.3	Surface	17.0	17.1	17.1	29.6	29.6	29.6	7.0	7.0	7.0	86.3	86.1	86.2	3.1	3.2	3.2		4.0	4.3	4.2	
					Middle	17.3	17.2	17.3	29.7	29.6	29.7	6.9	6.9	6.9	85.2	85.4	85.3	3.3	3.3	3.3	3.2	4.3	4.4	4.4	4.3
					Bottom	17.3	17.4	17.4	29.7	29.8	29.8	6.8	6.8	6.8	84.2	84.3	84.3	3.3	3.3	3.3		4.4	4.6	4.5	
G1	1057-1112	11.8	W	0.3	Surface	17.1	17.1	17.1	29.6	29.7	29.7	6.9	6.9	6.9	85.8	85.6	85.7	3.2	3.2	3.2		4.3	4.2	4.3	
					Middle	17.1	17.2	17.2	29.7	29.6	29.7	6.8	6.8	6.8	84.4	84.6	84.5	3.3	3.3	3.3	3.4	4.6	4.4	4.5	4.5
					Bottom	17.3	17.2	17.3	29.7	29.8	29.8	6.7	6.8	6.7	83.5	83.6	83.6	3.6	3.6	3.6		4.7	4.8	4.8	
E7	1117-1132	12.2	W	0.3	Surface	17.0	17.1	17.1	29.6	29.7	29.7	7.0	7.0	7.0	85.9	86.1	86.0	3.4	3.4	3.4		4.3	4.5	4.4	
					Middle	17.2	17.1	17.2	29.7	29.8	29.8	6.8	6.9	6.8	84.6	84.9	84.8	3.5	3.6	3.6	3.6	4.6	4.8	4.7	4.6
					Bottom	17.2	17.3	17.3	29.9	29.8	29.9	6.8	6.8	6.8	83.8	84.1	84.0	3.7	3.7	3.7		4.5	4.8	4.7	
F1	1137-1152	12.6	W	0.3	Surface	17.1	17.0	17.1	29.6	29.6	29.6	7.0	7.0	7.0	86.5	86.7	86.6	3.2	3.1	3.1		4.0	4.2	4.1	
					Middle	17.1	17.2	17.2	29.8	29.7	29.8	6.9	6.9	6.9	85.0	85.2	85.1	3.2	3.2	3.2	3.3	4.4	4.3	4.4	4.3
					Bottom	17.3	17.2	17.3	29.8	29.9	29.9	6.8	6.8	6.8	84.5	84.6	84.6	3.5	3.4	3.4		4.5	4.5	4.5	
G3	1157-1212	16.2	W	0.2	Surface	17.1	17.1	17.1	29.6	29.7	29.7	7.1	7.1	7.1	87.8	88.0	87.9	2.9	2.9	2.9		4.0	4.2	4.1	
					Middle	17.1	17.2	17.2	29.8	29.8	29.8	7.0	7.1	7.0	87.0	87.3	87.2	3.2	3.2	3.2	3.2	4.3	4.4	4.4	4.4
					Bottom	17.4	17.3	17.4	29.8	29.9	29.9	6.8	6.9	6.8	84.8	85.1	85.0	3.4	3.4	3.4		4.6	4.6	4.6	
E9	1217-1232	13.4	W	0.3	Surface	17.1	17.2	17.2	29.6	29.7	29.7	6.9	6.9	6.9	84.7	84.9	84.8	3.1	3.2	3.1		4.0	4.1	4.1	
					Middle	17.3	17.2	17.3	29.7	29.6	29.7	6.8	6.8	6.8	84.2	83.9	84.1	3.3	3.2	3.3	3.3	4.2	4.4	4.3	4.3
					Bottom	17.3	17.4	17.4	29.7	29.8	29.8	6.7	6.7	6.7	82.2	82.4	82.3	3.4	3.4	3.4		4.5	4.6	4.6	
S2	1237-1252	12.2	W	0.2	Surface	17.1	17.1	17.1	29.6	29.7	29.7	6.9	7.0	7.0	85.8	86.0	85.9	3.3	3.3	3.3		4.1	4.2	4.2	
					Middle	17.2	17.3	17.3	29.8	29.7	29.8	7.1	7.1	7.1	87.7	88.0	87.9	3.3	3.4	3.3	3.4	4.4	4.5	4.5	4.4
					Bottom	17.4	17.3	17.4	29.8	29.9	29.9	6.8	6.8	6.8	84.8	84.5	84.7	3.5	3.5	3.5		4.6	4.7	4.7	
G2	1257-1311	13.8	W	0.3	Surface	17.1	17.0	17.1	29.6	29.6	29.6	7.2	7.2	7.2	88.4	88.6	88.5	3.2	3.2	3.2		4.0	4.2	4.1	
					Middle	17.2	17.1	17.2	29.7	29.8	29.8	7.0	7.0	7.0	86.8	87.0	86.9	3.3	3.3	3.3	3.3	4.2	4.3	4.3	4.4
					Bottom	17.2	17.3	17.3	29.9	29.8	29.9	6.8	6.8	6.8	84.1	83.9	84.0	3.6	3.6	3.6		4.6	4.8	4.7	
S3	1315-1328	11.6	W	0.2	Surface	17.0	17.1	17.1	29.6	29.5	29.6	7.0	7.0	7.0	86.7	87.0	86.9	3.1	3.1	3.1		4.0	4.2	4.1	
					Middle	17.3	17.2	17.3	29.6	29.7	29.7	6.9	6.9	6.9	85.0	85.2	85.1	3.2	3.2	3.2	3.2	4.4	4.6	4.5	4.3
					Bottom	17.3	17.4	17.4	29.7	29.8	29.8	6.7	6.8	6.7	83.5	83.8	83.7	3.3	3.4	3.3		4.4	4.2	4.3	

Remark or Observation:

Note: * Average

** Depth Average